

Magex produces
with quality system
certified by



Latest generation distributor that allows the sale of products in total safety even with a high face value thanks to the robotic system and the touchscreen panel, allowing the display of all the data related to the objects offered for sale, with the addition of images, descriptions and video.

It allows you to perform web chat to provide assistance to the user in case of special applications, giving advice in real time. It is suitable for the sale of any product, in particular technological objects such as smartphones, tablets, cartridges for printers, watches, accessories for computers, cameras, video games and clothing.

What makes Colosseo unique is the double internal stock that allows to have up to 12 floors, 6 floors each side with 9 selections per floor. Thanks to that, it is possible to have up to 12 different floor heights.

COLOSSEO DELIVERY SYSTEM



The Colosseo is equipped with a shuttle controlled by a robotic system that transports the product from the floors to the dispensing area. Maximum reliability at the dispensing moment,

thanks to the photosensors placed laterally on the shuttle which are able to recognize the product that enters and exits. For more expensive items it's possible to apply for a special microchip, making an additional control at delivery ensuring total security during sale.

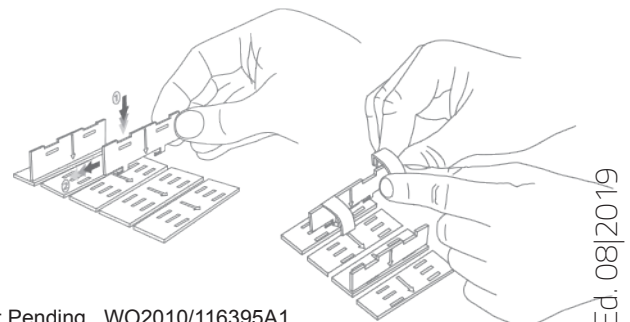
The transport belt, which is installed in the shuttle, allows the sale of delicate products and the horizontal delivery, when required.

MAGEX LOADING SYSTEM

Maximum adaptability to distribute any type of product, you can pair more than one lane in an automatic way to distribute products that are wider. The system also allows the insertion of interlocking partitions to separate products that are next to one another from the next.

The system has a self-diagnosis system that checks the operating status of the lane before any disbursement of the product.

Patented VI2006A000275, VI2009A000079
VI2010A000343, VI2011A000026



Patent Pending WO2010/116395A1
US 2012/0104018A1
10717310.6

Ed. 08/2019

Colosseo



Width	2255 mm
Depth	984 mm
Height	1980 mm
Weight (with 12 floors)	833 Kg
Maximum number of floors	12 (9 lines each)
Selections per floor	2 to 18
Lighting type	High luminosity led (20 W)
Voltage supply	240V/50Hz 110V/60Hz
Power consumption	75 W
Power consumption by cooling unit	323W each
Climate class refrigeration unit	5
Temperature control and cooling system	Electronic with real time alarm
Internal temperature	2°C
Cooling unit operating temperature	up to 40°C
Payment systems compatibility	MDB/CCTALK

REAL TIME DATA

Magex is able to provide Data to all its customers in real time via a cloud service for the administration management of the vending kiosks, accessible from any connection to the network and Internet. This permits viewing in real time all data sales, stock status, coins / banknotes inserted or yields, reboots and any planned change in the operation. The administration portal also monitors intrusion attempts and the internal temperature of the distributor and evaporator, from the display with related graphics.

COLOURS



TECHNICAL FEATURES

- Retrieval area with automatic opening
- Reinforced retrieval area
- Shatter proof resistant glass
- Console with independent opening
- Reinforced steel frame
- 22" monitor with 1920x1080 px resolution
- Infra-red anti-vandal touch screen
- Industrial computer with dual core
- Operating system installed with a 32Gb hard disc
- Display door completely isolated
- LED lighting
- Console locks are completely isolated
- Modular configuration of shelves in height, depth and number of selections
- Self diagnostic system for troubleshooting
- Electronic multi communication protocol included
- System for data management and statistics display
- Robotic system with multi axis for collection and delivery of the products
- Temperature control with recording
- Protection cover for the machine feet
- Camera kit
- Speaker kit

OPTIONS

- Banknote acceptor.
- Banknote reader with change.
- Banknote and coin reader with tube change.
- Coin acceptor and with change dispenser.
- GSM data management.
- Lexan protection.
- LCD display for prices.
- Lift.
- Refrigeration unit.
- System for handling variable weights.
- Camera kit.
- Inserting items via Inventory Code.
- Graphic personalization.
- Fidelity RFID card system.
- Age Verification reader.
- Receipt Printer.
- Outdoor coverage.
- Back door to load products .
- Credit card reader - ATM.